

SPONSORS

unine

UNIVERSITÉ DE
NEUCHÂTEL

Centre de recherche sur
les interactions sociales

FNSNF

SWISS NATIONAL SCIENCE FOUNDATION

Schweizerische Akademie der Geistes- und Sozialwissenschaften
Académie suisse des sciences humaines et sociales
Accademia svizzera di scienze morali e sociali
Accademia svizra da scienzas moralas e socialas
Swiss Academy of Humanities and Social Sciences



**VALS
ASLA**

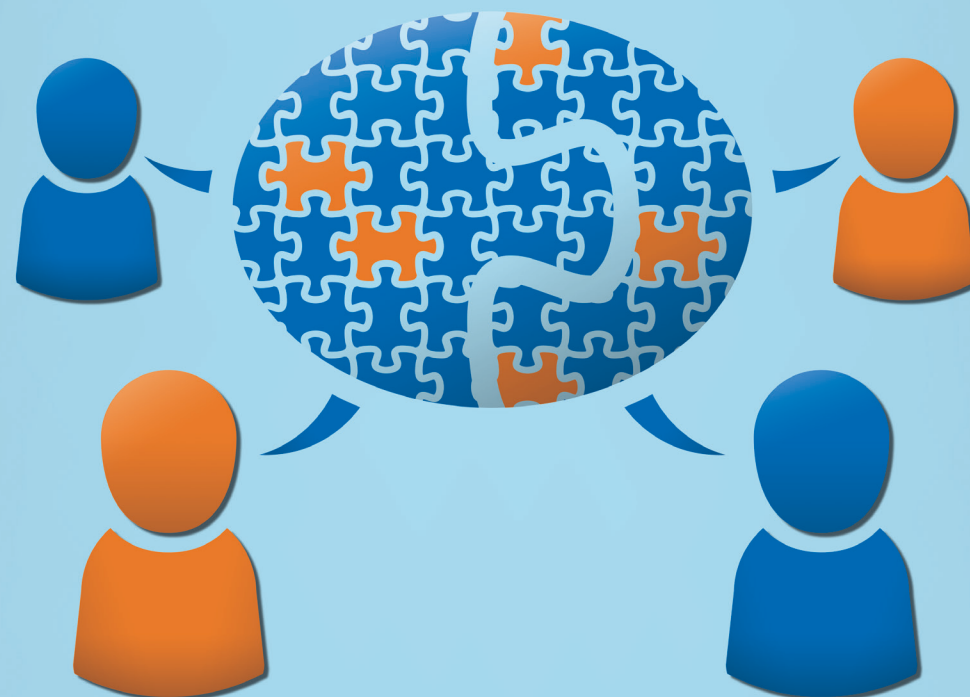
Vereinigung für Angewandte Linguistik in der Schweiz
Association Suisse de Linguistique Appliquée
Associazione Svizzera di Linguistica Applicata
Associaziun Svizra da Linguistica Applitgada
Swiss Association for Applied Linguistics

Société Suisse de Linguistique

Illustration Vincenzo Abet

Interactive Competences and Practices in a Second Language

icop>L²



International conference
18-20 January 2017
Neuchâtel (Switzerland)

INTERNATIONAL CONFERENCE ICOP-L2

INTERACTIONAL COMPETENCES AND PRACTICES IN A SECOND LANGUAGE

This conference brings together researchers from various horizons (e.g. linguistics, education, sociology) who investigate how people engage in second language talk-in-interaction: What are the basic ingredients of L2 interactional competence? How does such competence vary across situations and over time? How do L2 speakers use the linguistic resources at their disposal to accomplish social actions in coordination with others? How do linguistic and other resources (gaze, gesture, posture) work together in L2 talk? How does social interaction structure learning processes and learning products? How can L2 interactional competence and learning through interaction be addressed in educational contexts? These are among the questions that will be tackled during the conference.

The conference papers and panels will be organized in **three thematic strands**:

- L2 talk-in-interaction
- Learning-in-interaction
- L2 interactional competence

KEYNOTE ADDRESSES

- **Joan Kelly Hall** (Penn State University): Interactional competence: Looking back, moving forward
- **Søren Eskildsen** (University of Southern Denmark): From form-meaning pairings to action-construction pairings: The mutually constitutive nature of linguistic constructions and social action in L2 talk
- **John Hellermann** (Portland State University): Sequential and experienced actions: Conversation analysis used to address 'learning'
- **Spencer Hazel** (Newcastle University): Interactional competence as embodied practice

INVITED SYMPOSIUM

- **Tim Greer** (Kobe University): Longitudinal investigations into interactional competences

PRE-CONFERENCE WORKSHOPS (18 JANUARY 2017)

- **Johannes Wagner** (University of Southern Denmark): Basic issues in longitudinal studies on social interactions
- **Evelyn Berger** (University of Geneva & University of Neuchâtel): Building collections
- **Olca Sert** (Hacettepe University) & Adam Brandt (Newcastle University): Doing comparative research on L2 interactions

ORGANIZING COMMITTEE

Prof. Dr. Simona Pekarek Doehler (Conference co-chair, University of Neuchâtel)
Dr. Evelyn Berger (Conference co-chair, University of Geneva & University of Neuchâtel)
Dr. Virginie Fasel Lauzon (University of Neuchâtel)
Dr. Cécile Petitjean (University of Neuchâtel)
MA. Klara Skogmyr Marian (University of Neuchâtel)
Florence Waelchli (University of Neuchâtel, administration)

SCIENTIFIC COMMITTEE

Asta Cekaite (Linköping University); **Natalia Evnitskaya** (Autonomous University of Madrid); **Laurent Filliettaz** (University of Geneva); **Tim Greer** (Kobe University); **Gabriele Kasper** (University of Hawai'i at Mānoa); **Silvia Kunitz** (Rice University); **Niina Lilja** (University of Tampere); **Martin Luginbühl** (University of Basel); **Numa Markee** (University of Illinois at Urbana Champaign); **Helen Melander** (Uppsala University); **Lorenza Mondada** (University of Basel); **Junko Mori** (University of Wisconsin-Madison); **Hanh Nguyen** (Hawai'i Pacific University); **Fritjof Sahlström** (University of Helsinki); **Paul Seedhouse** (Newcastle University); **Jan Svennevig** (University of Oslo); **Gabriele Pallotti** (University of Modena and Reggio Emilia); **Arja Piirainen-Marsch** (University of Jyväskylä); **Steven Thorne** (Portland State University); **Steve Walsh** (Newcastle University); **Hansun Waring** (Columbia University); **Richard Young** (University of Wisconsin-Madison)

PRACTICAL INFORMATION

The conference will be held at the University of Neuchâtel, FSE, rue A.L. Breguet 2, CH-2000 Neuchâtel.

Online registration is required to attend the event. Registration closes on January 5, 2017.

A detailed program is available on the conference website.

For more details about the conference and online registration, visit our website:

www.unine.ch/icop_l2

Contact: icop.l2@unine.ch